

# NOVO

SCADA

Innovation control and information analysis



Wireless Technologies USA  
Witech USA Corp



# NOVO SCADA



With more than 27 years of experience at helping Natural Gas on their automation needs in exploration, transport and distribution, Witech developed NOVO. More than just a Scada system, NOVO is an integral process administration tool for the Natural Gas industry including solutions for such a dynamic industry. From infrastructure at exploration wells to residential/industrial end customers, every need for management is covered. Different modules integrate infrastructure integrity/maintenance and inventory, reliable real time operational control, selective alarming, nomination/prediction, billing/settlement, historical data analysis and bi-directional interface with other corporate systems. High availability is covered by state of the art replication and disaster recovery, high security on databases and communications, cyber attack prevention, simultaneous redundant real time servers and high connectivity through different communication media. Multivendor remote devices ensure that all of assets are being monitored/managed. Different Protocols allow for an easy integration of any manageable device to be tracked. This includes infrastructure monitoring devices as Cathodic Protection, Gas quality and odorant injection, odorant levels, chromatographs, RTUs, PLCs, Flow computers, fraud prevention/ detection devices, and many more.



## FEATURES



Reduced time and cost by automating functions that can be done remotely.



Prevent disasters before they occur. Even with no operator intervention and/or communications failure, it takes actions to prevent those occurrences.



High reliability, Multi control centers, mobile Scada, multiple communication media and multiple app back up servers are automatically chosen according to availability to ensure operability.



Extended benefits throughout the full process. Enterprise-wide automation and information management at up-mid and downstream; from monitoring to billing and prediction.



High level of security for both real time operational parameters and Historical data. Secured proprietary encryption of all communications with field devices as well as all databases.





# APPLICATIONS



EXTERNAL  
MANAGEMENT  
SYSTEMS

Webservice OPC FTPS DBlinks



Variable Tracker

Remote Terminal Units  
Flow Computers

Automated Meter Reading  
with flow control

Control & Assets Monitoring

Virtual AGA Standards  
Correction / Validation

MEASUREMENT



SECURITY



Dynamic Encryption

Biometrics

Artificial Intelligence

Disaster Recovery

Chromatography

Odorization



GAS QUALITY

NOVO  
SCADA

WT-WM Witness

Automated Meter Reading  
with flow control



TECHNICAL AND  
NON-TECHNICAL LOSSES  
(FRAUD)

NOVO Lab

Maintenance

Cathodic Protection

Actuators Control

Real PIG Location



INTEGRITY



COMMERCIAL

Nomination

Settlement/Billing

Gas Balance



# FUNCTIONALITY



- High security from SQL Server
- 1000 levels of operator's privileges lets administrator configure different users to do exactly what they need to. What they can do, see and days/time of allowed access.
- Access from anywhere. Client server and Web based configurations.
- Audit trail though all operation. Trace of all actions done by any user stored historically.
- Disaster recovery. Back up real time application and communication servers. No data is lost when a server or communication media fails.
- Scada operator control. Using face recognition technology, controls that the right operator is logging in and keeps track of actual operator attention to Scada.
- Historical data validation. Automated analysis of incoming historical Data generates alarms.
- State of the art reporting engine. Statistics, historical data, trending, nomination / prediction, billing/settlement, audit trail, alarms.
- High availability. Monitoring and alarming of failing communication media. Management of contingency communication channels to all remote sites.
- Historical variable tracker. Monitor on a trending graphic and generation of smart alarms when variables are off the historically expected values.
- Web access from anywhere. Administrator, users and end customers have access to what their privileges allow them using an internet connection.



# FUNCTIONALITY



- Maintenance module. All assets are tracked in regards to calibration certificates, inventory, maintenance schedules and so on.
- Automated Measurement auditing. Compares in real time behavior of 2 consumption measurements and generates alarms when off. Used to monitor fraud or non-technical losses.
- Automated Meter Reading (AMR). Compatible with low power automatic meter reading and fraud/non-technical losses detection.
- Automated control over odorization systems. Novo takes care of the right odorant application to ensure the proper odorant level at all points in the network.
- Allows the creation of personalized Crystal Reports and associate them with real-time and historical information.
- Geographic location of all stations.
- Automated control over cathodic protection systems. Novo takes care of adjusting the CP level to ensure the right level at different monitoring points. Also handles instant-off sync.
- Nomination/Prediction. Automates company's and end customer's nomination on their usage of gas or transport pipelines hourly/daily. Novo calculates their nominations using a complex analysis of their historical behavior.
- Billing/Settlement. Automation of billing, billing cycles, contract management, capacities taking into account all variables and parameters for taxes, rates, tariffs, etc.
- User alarm notifications through email and/or text message regarding their station preferences.
- Real-time trend graphs.



# FUNCTIONALITY



- Dynamic graphic tools to associate with plans, photos, and 3D models of each station.
- Compatible WEB module with different browsers and operating systems (Windows, IOS, Android, and Linux).
- Validation of historical data when deviations occur.
- Historical duplicity is not allowed.
- Historical data editing according to user access parameters.





# BENEFITS



Reliable and timely communication through redundant channel configuration for each remote station.



Considerable time reduction in remote chromatography adjustments thanks to massive pointer configuration.



Task scheduler for instantaneous and historical readings, and the sending of reports in an easy and intuitive manner.



Events Audit Trail allows the user to monitor events such as closing/opening of remote valves, changes in configuration variables, chromatography, acknowledgment of alarms and any other action within the software allowing for a complete control of the user's system.



Secure and reliable information given its back-up system with parallel hotstandby servers.



# HMI NOVO



Taking operations to the next level, NOVO's proven HMI module helps to precisely monitor, control, and visualize every aspect of your operations for intelligent control using new high performance technology. With a quick glance, operators know what's important and having all information on hand directs them to the right actions and on time decisions to drive increased efficiency and reduced costs.

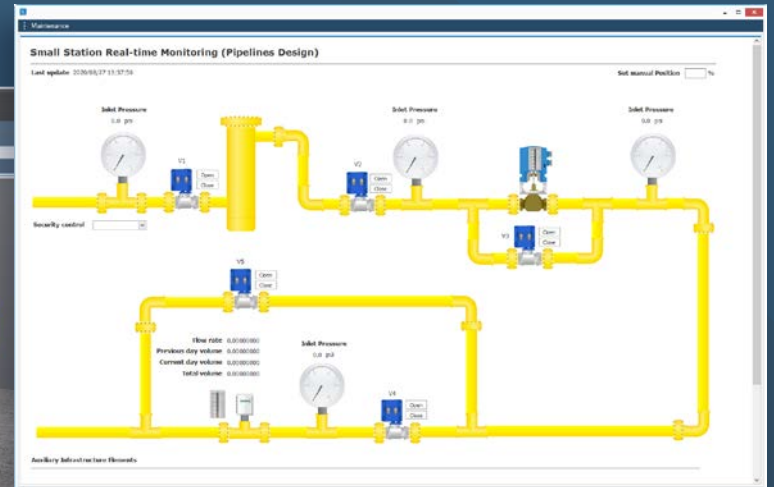
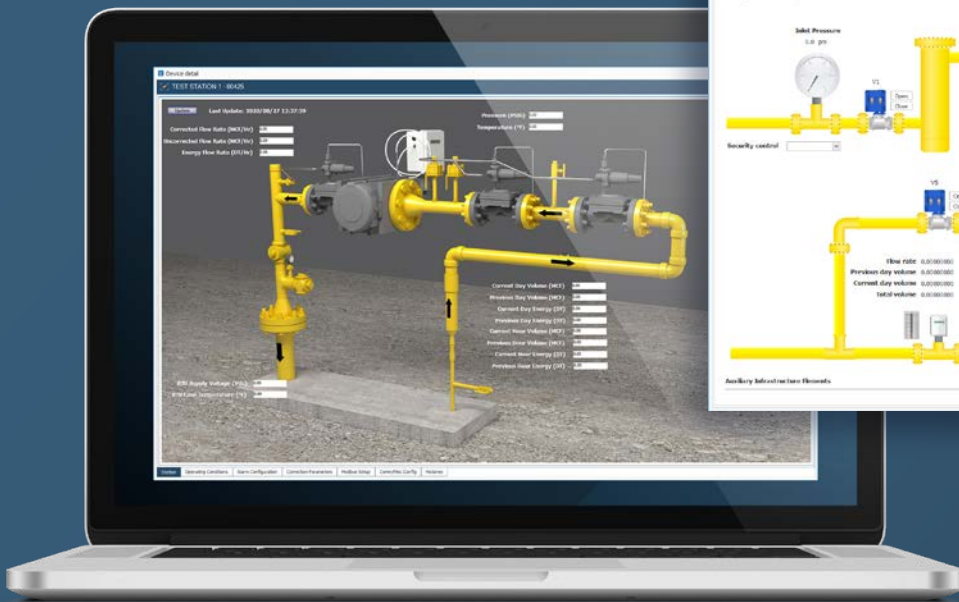


- ◎ Highly intuitive graphic representation of every hardware in the field and their health.
- ◎ Real time trending, historical data, alarm history, and all variables required for detecting potential problems before they happen.
- ◎ Easy to set up user interfaces enforce to situational awareness of abnormal conditions.
- ◎ Secure easy access to remote controls.
- ◎ Implemented under guidelines by The High Performance HMI Handbook.





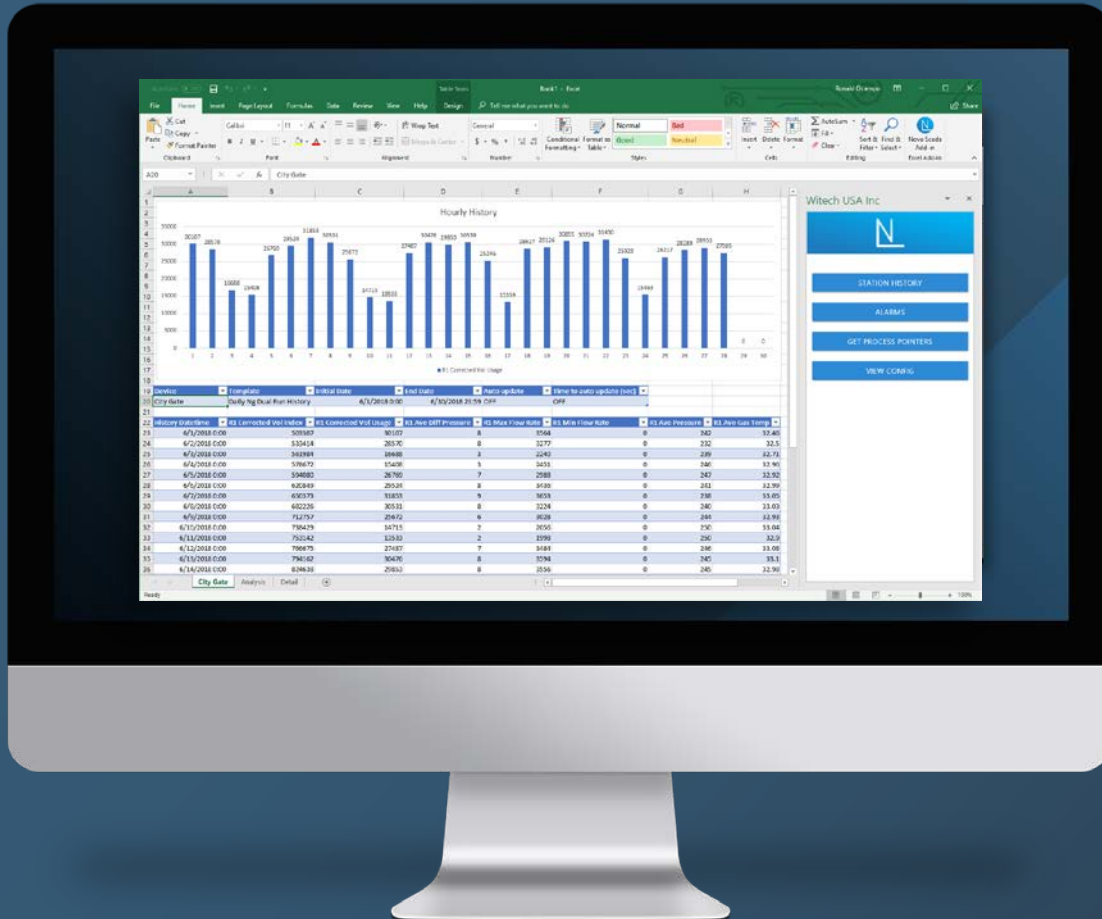
# HMI NOVO



- ① 3D render station capability for a more accurate representation.
- ① Easy configuration and real-time pipeline design.
- ① Various controls and gadgets for ease of use and control of HMI station.



# NOVO ADD-IN

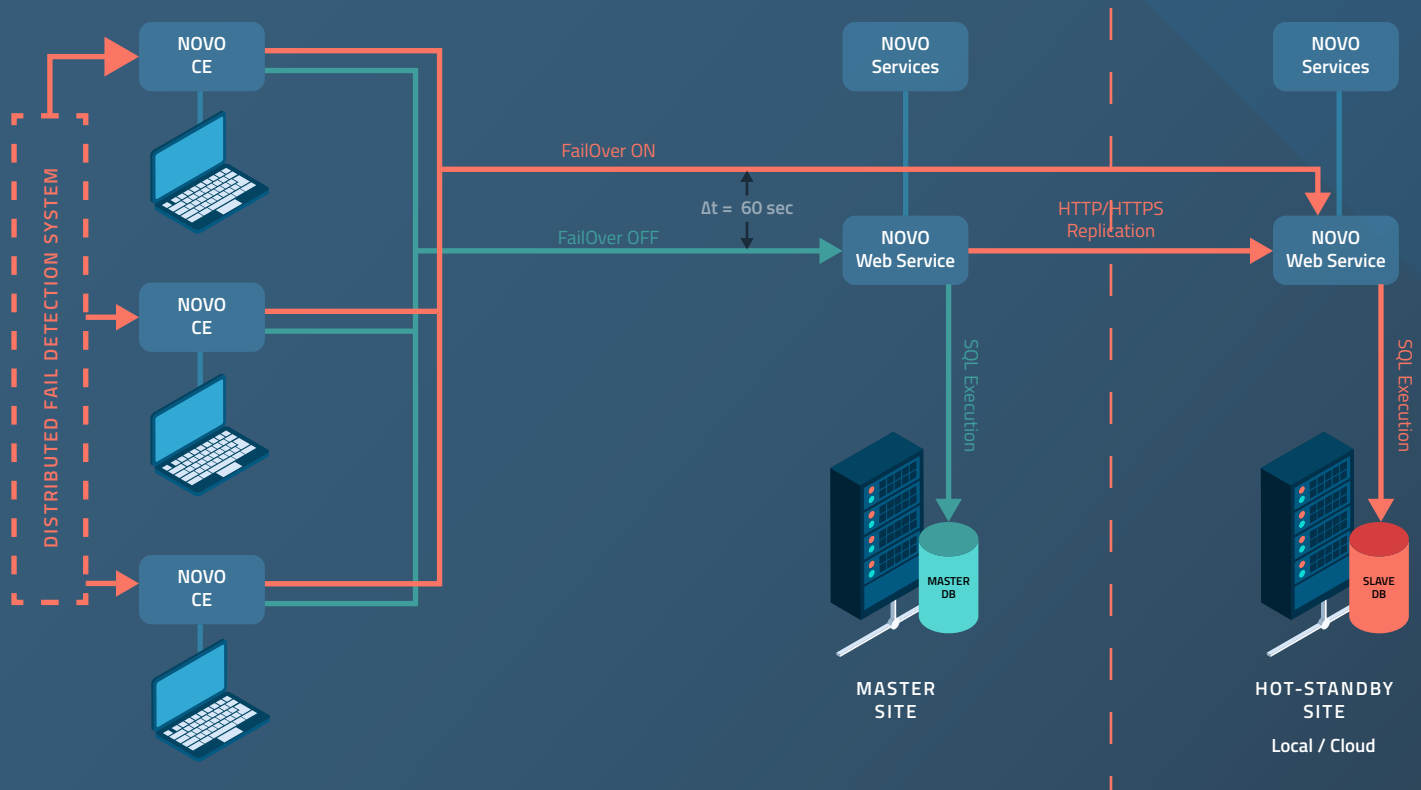


This module is a Microsoft Office integration tool for NOVO that allows to synchronize information from NOVO SCADA with apps like Excel and Word allowing users to create personalized Office documents that include multiple charts and advanced data analysis with Office formulas based on real-time telemetry information provided by the NOVO Integrator. With this tool users can see real-time variable information such as pressure, temperature, flow, voltage and much more for multiple stations simultaneously. Furthermore, it allows to obtain all history data and alarms in real-time from all stations which update automatically as data becomes available in NOVO SCADA.





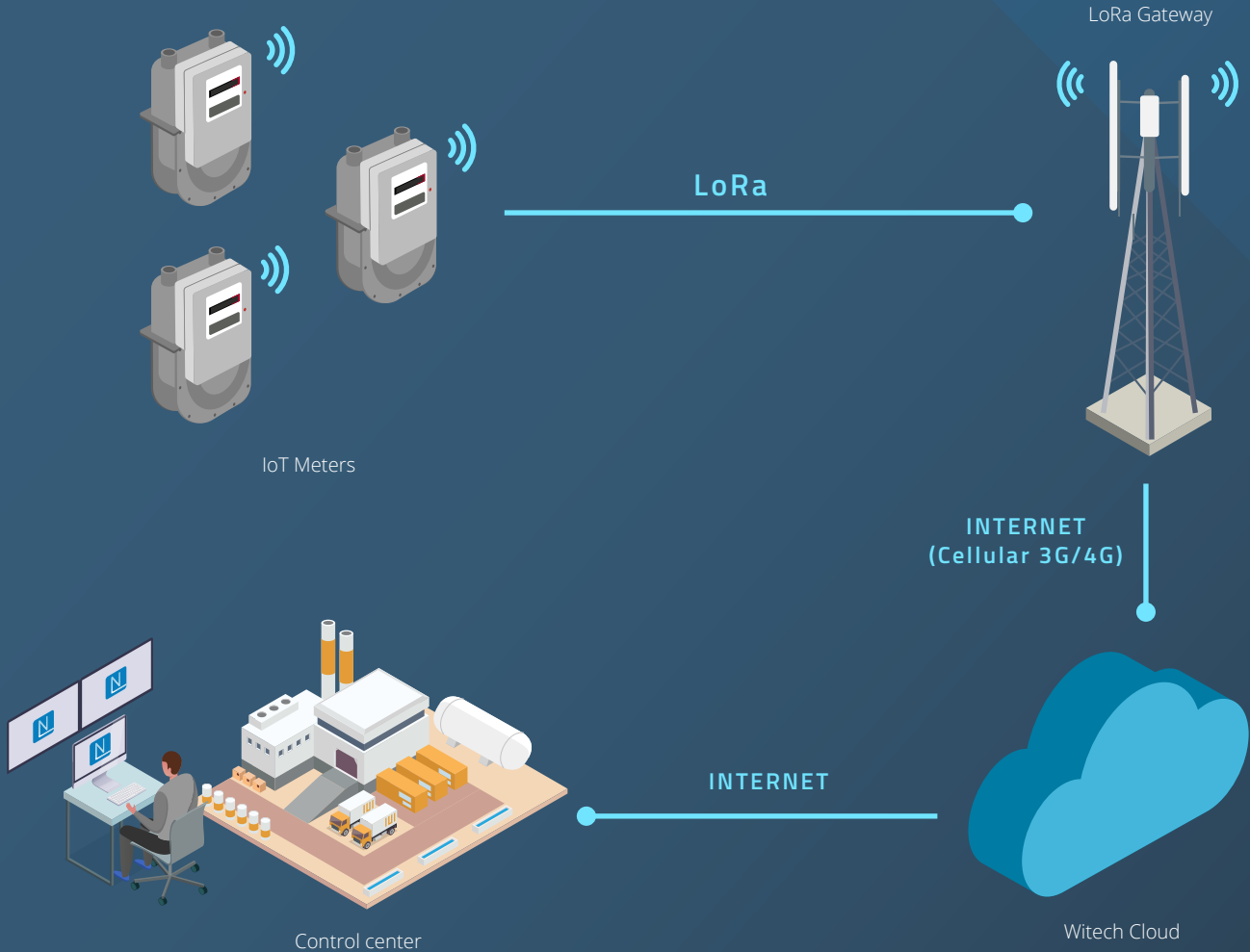
# CONTINGENCY SERVER CRASH RECOVERY



The NOVO Hot Stand-by is an option that is part of NOVO's technological architecture that allows to implement high availability in the SCADA system and each of its components, to ensure immediate business continuity in the event of any incident in the main server. The NOVO Hot Stand-by module is made up of a Master server (primary server) and a Slave server that is in Stand-by or waiting for the primary to fail. When the system has not presented any crash, a replication process through https redirects the information traffic from the Master server to the Slave server constantly making both servers synchronized at all time with both information and configurations.



# SMART METERS



- Monitoring and control of Smart Meters through IoT.
- Reading and fraud detection.
- Valve control for cut-off and reconnection in postpaid and prepaid systems.
- Increased safety parameters by automatically shutting off the gas supply when abnormal flows are detected.
- Daily monitoring of user gas consumption.



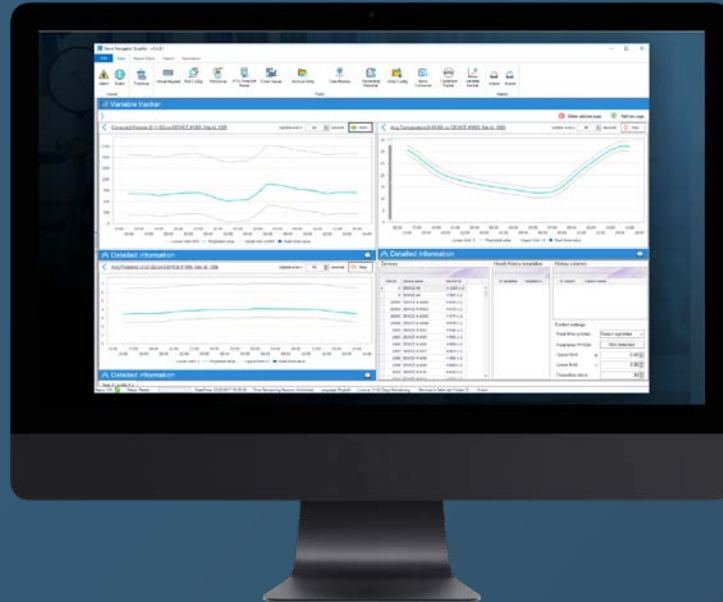


# VARIABLE TRACKER





# VARIABLE TRACKER



Variable tracker it's a NOVO SCADA module that allows the monitoring of any operational value in real time, this involves a constant comparison of the device's measuring variable value vs. its projected normal behavior during that specific day and at that specific time. This real-time comparison generates a gap of expected behavior in variables such as: pressure, used volume, temperature, voltage, etc. and

compares them against an upper and lower limit based on historical information and the variable tracker projection, in case of obtaining RTU values above or below such limits, the NOVO SCADA generates an alarm for the operator to see in the Alarm Visor, as well as an Email and SMS in order to alert the interested parties.



Obtains variable values in real time.



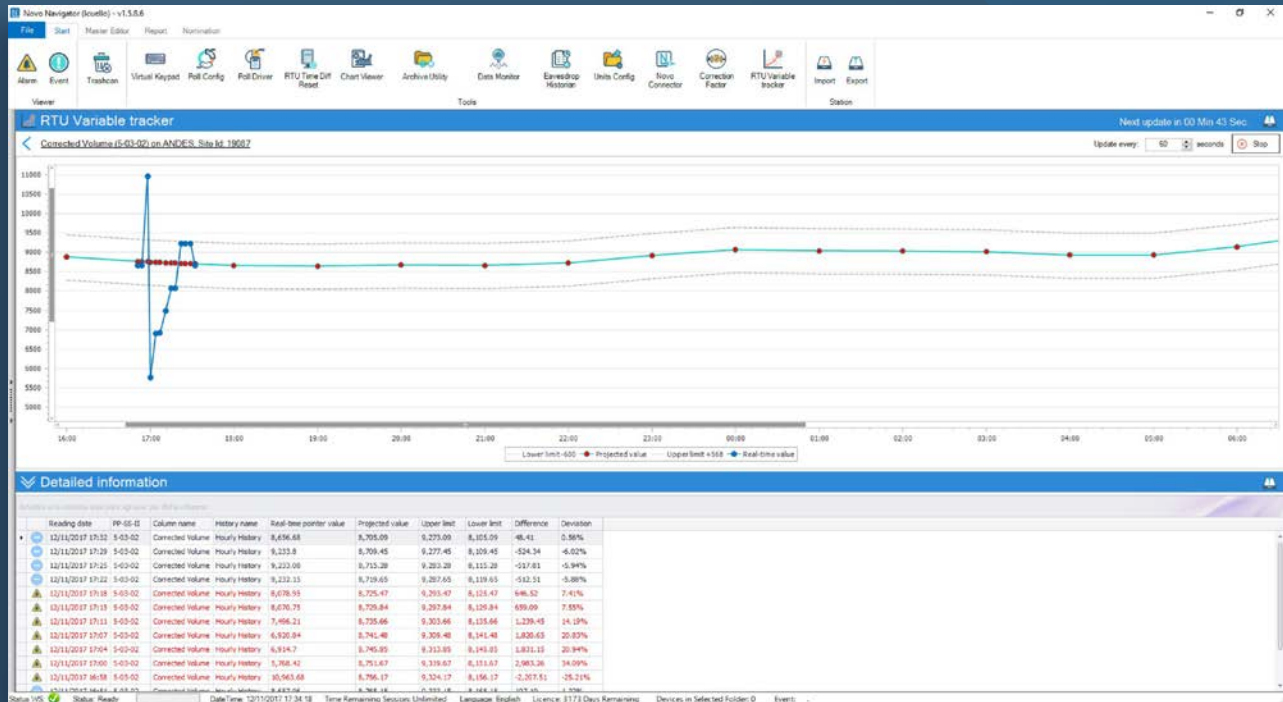
Generates real-time alarms.



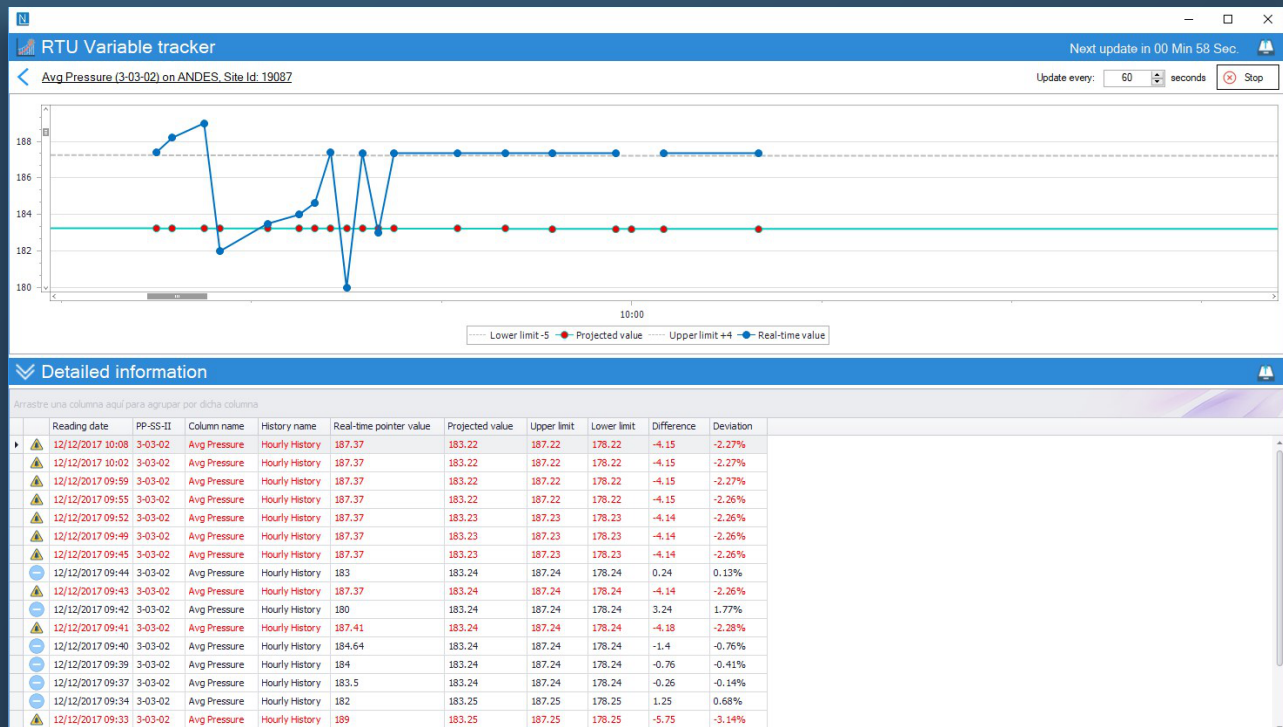
Calculates out-of-limit values in real time.



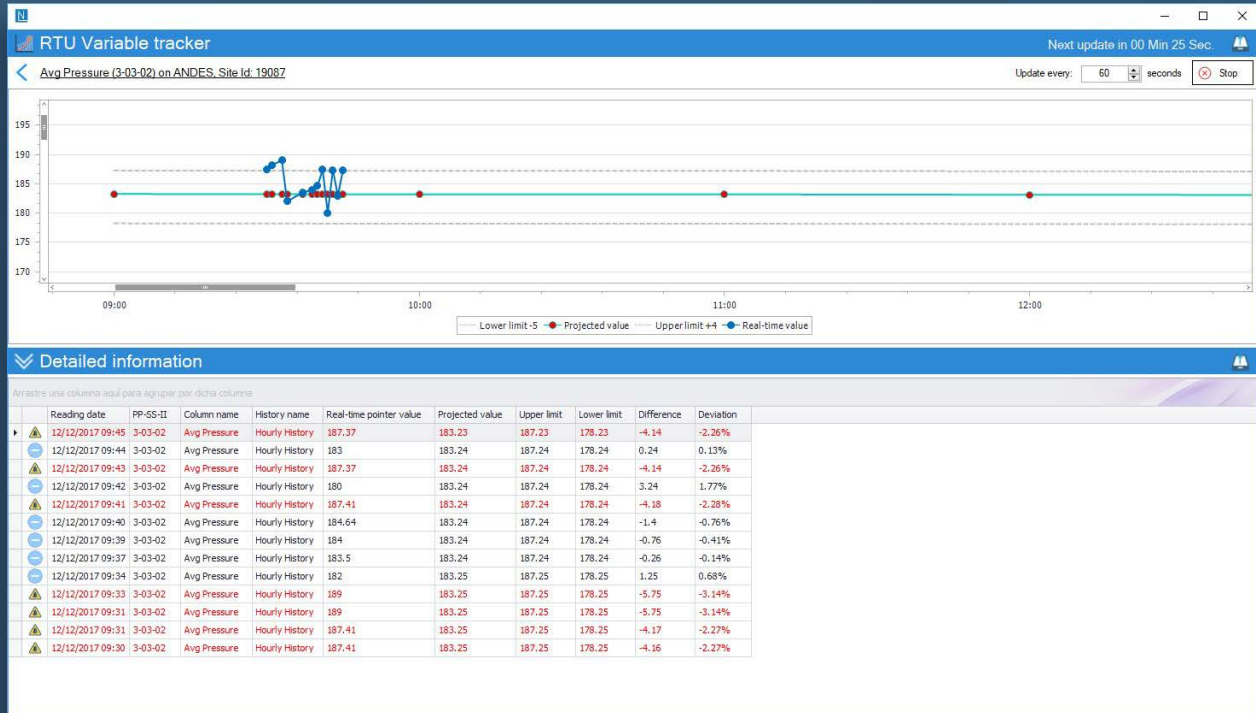
# Used Volume Tracking



# Average Pressure Tracking (with communication loss)



# Average Pressure Tracking



In the above image, it is possible to see the average pressure tracker every 60 seconds.





# MAINTENANCE MODULE



- Automatic maintenance plan scheduling for all devices and equipment in a station.
- Monitoring compliance of the defined maintenance plan.
- Record of all preventive and corrective maintenance of all station elements.
- It allows to create custom elements that will be attended throughout the maintenance plan.
- It allows to consult historical information regarding all maintenances in order to build a resume of all equipment.
- Upload of supporting material regarding all maintenance activity.
- Maintenance scheduling calendar.



# NOVO LAB



Type	Brand	Model	Serial	Calibrate By	Calibrate Date	Cert/Kate	Creation Date	Modification Date
Pattern	Sensor GPC	GHE Generic 01	3034904-035	ABSOLUTE	06/13/2019 00:00:00	CONMET-19-09MP-1181-3041	11/29/2019 11:50:12	01/28/2020 09:00:00
Pat	Sensor GPC	GHE Generic 01	303283	PTD SENSOR PATTERN	04/20/2019 00:00:00	CONMET	11/29/2019 11:50:12	01/28/2020 09:00:00
Pat	Not assigned	Not assigned	3031197	PTD SENSOR IN POSITION 1	CONMET	07/16/2019 00:00:00	CLP-129419	11/29/2019 11:50:12
Pat	Generic	Generic 1	3031195	PTD SENSOR IN POSITION 2	CONMET	07/16/2019 00:00:00	CLP-129419	11/29/2019 11:50:12
Pat	Not assigned	Not assigned	3031175	PTD SENSOR IN POSITION 3	CONMET	07/16/2019 00:00:00	CLP-129419	11/29/2019 11:50:12
Pat	Not assigned	Not assigned	3031200	PTD SENSOR IN POSITION 4	CONMET	07/16/2019 00:00:00	CLP-129419	11/29/2019 11:50:12
Pat	Not assigned	Not assigned	1130070	PTD SENSOR IN POSITION 5	CONMET	07/16/2019 00:00:00	CLP-130019	11/29/2019 11:50:12
Pat	Not assigned	Not assigned	30321-04	RTD SENSOR IN POSITION 6	CONMET	07/17/2019 00:00:00	CLT-130119	11/29/2019 11:50:12
Pat	Sensor GPC	GHE Generic 01	1130069	PTD SENSOR IN POSITION 7	CONMET	07/17/2019 00:00:00	CLP-130219	11/29/2019 11:50:12
Pat	Not assigned	Not assigned	1130093	PTD SENSOR IN POSITION 8	CONMET	07/17/2019 00:00:00	CLP-130319	11/29/2019 11:50:12
Pat	Not assigned	Not assigned	1212511	PTD SENSOR IN POSITION 9	CONMET	07/17/2019 00:00:00	CLP-130419	11/29/2019 11:50:12
Pat	GLG Sensor	Glq stander	1130099	PTD SENSOR IN POSITION 10	CONMET	07/17/2019 00:00:00	CLP-130519	11/29/2019 11:50:12
Pat	Sensor GPC	GHE Generic 01	3032812	RTD SENSOR PATTERN	CONMET	07/17/2019 00:00:00	CLT-299919	11/29/2019 11:50:12
Pat	Not assigned	Not assigned	3032823	RTD SENSOR IN POSITION 1	CONMET	07/06/2017 00:00:00	CLT-306817 RTD II	11/29/2019 11:50:12
Pat	Not assigned	Not assigned	3032818	RTD SENSOR IN POSITION 2	CONMET	07/06/2017 00:00:00	CLT-306817 RTD III	11/29/2019 11:50:12
Pat	Not assigned	Not assigned	3032819	RTD SENSOR IN POSITION 3	CONMET	07/06/2017 00:00:00	CLT-306817 RTD IV	11/29/2019 11:50:12
Pat	Not assigned	Not assigned	3032812	RTD SENSOR IN POSITION 4	CONMET	07/07/2017 00:00:00	CLT-306817 RTD V	11/29/2019 11:50:12
Pat	Not assigned	Not assigned	3032823	RTD SENSOR IN POSITION 5	CONMET	07/07/2017 00:00:00	CLT-306817 RTD VI	11/29/2019 11:50:12
Pat	Not assigned	Not assigned	3032817	RTD SENSOR IN POSITION 6	CONMET	07/07/2017 00:00:00	CLT-306817 RTD VII	11/29/2019 11:50:12
Pat	Sensor GPC	GHE Generic 01	3032813	RTD SENSOR IN POSITION 7	CONMET	07/07/2017 00:00:00	CLT-306817 RTD VIII	11/29/2019 11:50:12
Pat	Not assigned	Not assigned	1130068	RTD SENSOR IN POSITION 8	CONMET	07/07/2017 00:00:00	CLT-306817 RTD IX	11/29/2019 11:50:12

The metrological verification module for gas meters in NOVO, also known as Novo Lab, allows utility companies to verify the life expectancy of diaphragm, rotary and turbine meters complying with what is specified in standard NTC 2728: 2015 and OIML R31: 1995 Diaphragm Gas Meters, when calculating and certifying both the error and the uncertainty in the measurement of industrial and residential gas meters with respect to standard meters.

This module has been implemented within the new HMI DX and integrates with Witech USA hardware solutions for calibration testbenches enabling monitoring and control of the test generation process and their respective repetitions with different gas flows as specified by regulatory standards.



# NOVO LAB



- Novo Lab allows the filling of meter information such as brand, model, serial number, customer information, attachments, among other critical information for certificate generation.

Place / Remove meter(Control # 4912 - Picturebox)

Slot assignment

Block:  Location:

History Template:

Meter

Meter Information Customer Information Attachs

Type:  Status:

Brand:  Model:

Serial number:

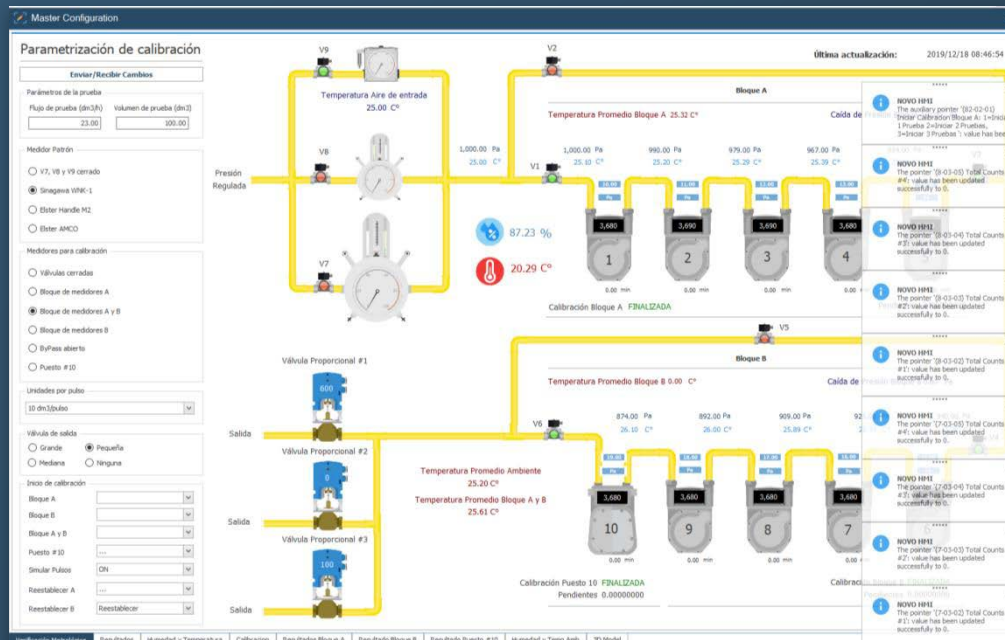
Min measuring (dm3/h):  Max measuring (dm3/h):

Min calibration (dm3/h):  Max calibration (dm3/h):

Resolution (dm3):  Calibrated by:

Placing date:  Removing date:

- Configuration of base values of calibration tests, as well as variable definition for the execution of metrological verification tests.





# NOVO LAB



- Generation of history records for each position of each block of meters during testing and store them in NOVO templates.

Puesto #3

Drag a column header here to group by that column.

Histor y DateTime	Presion Patron (Psi)	Presion Medidor (Psi)	Volumen Patron (Tm)	Volumen Medidor (Tm)	Temp Patron (Tm)	Temp Medidor (Tm)	Caudal	Medidor Patron	Serie Medidor	Press Diff	Case Temperature	Supply Voltage
12/18/2019 07:51:00	1000	979.00	98.20	100.00	25.00	25.30	14	1	370	12		
12/18/2019 07:52:00	1000	979.00	98.20	100.00	25.00	25.30	14	1	370	12		
12/18/2019 08:04:00	1000	979.00	98.20	100.00	25.00	25.30	20	1	370	12		
12/18/2019 08:05:00	1000	979.00	98.20	100.00	25.00	25.30	20	1	370	12		
12/18/2019 08:06:00	1000	979.00	98.20	100.00	25.00	25.30	20	1	370	12		
12/18/2019 08:09:00	1000	979.00	98.20	100.00	25.00	25.30	23	1	370	12		
12/18/2019 08:10:00	1000	979.00	98.20	100.00	25.00	25.30	23	1	370	12		
12/18/2019 08:13:00	1000	979.00	98.20	100.00	25.00	25.30	23	1	370	12		
12/18/2019 08:53:00	1000	979.00	98.20	100.00	25.00	25.30	23	1	370	12		
12/18/2019 08:54:00	1000	979.00	98.20	100.00	25.00	25.30	23	1	370	12		

Puesto #4

Drag a column header here to group by that column.

Histor y DateTime	Presion Patron (Psi)	Presion Medidor (Psi)	Volumen Patron (Tm)	Volumen Medidor (Tm)	Temp Patron (Tm)	Temp Medidor (Tm)	Caudal	Medidor Patron	Serie Medidor	Press Diff	Case Temperature	Supply Voltage
12/18/2019 07:51:00	1000	967.00	98.20	100.00	25.00	25.40	14	1	370	13		
12/18/2019 07:52:00	1000	967.00	98.20	100.00	25.00	25.40	14	1	370	13		
12/18/2019 08:04:00	1000	967.00	98.20	100.00	25.00	25.40	20	1	370	13		
12/18/2019 08:05:00	1000	967.00	98.20	100.00	25.00	25.40	20	1	370	13		
12/18/2019 08:06:00	1000	967.00	98.20	100.00	25.00	25.40	20	1	370	13		
12/18/2019 08:09:00	1000	967.00	98.20	100.00	25.00	25.40	23	1	370	13		
12/18/2019 08:10:00	1000	967.00	98.20	100.00	25.00	25.40	23	1	370	13		
12/18/2019 08:13:00	1000	967.00	98.20	100.00	25.00	25.40	23	1	370	13		
12/18/2019 08:53:00	1000	967.00	98.20	100.00	25.00	25.40	23	1	370	13		
12/18/2019 08:54:00	1000	967.00	98.20	100.00	25.00	25.40	23	1	370	13		

Puesto #5

Drag a column header here to group by that column.

Histor y DateTime	Presion Patron (Psi)	Presion Medidor (Psi)	Volumen Patron (Tm)	Volumen Medidor (Tm)	Temp Patron (Tm)	Temp Medidor (Tm)	Caudal	Medidor Patron	Serie Medidor	Press Diff	Case Temperature	Supply Voltage
12/18/2019 07:51:00	1000.00	954.00	98.20	100	25.00	25.60	14	1	370	14		
12/18/2019 07:52:00	1000.00	954.00	98.20	100	25.00	25.60	14	1	370	14		
12/18/2019 08:04:00	1000.00	954.00	98.20	100	25.00	25.60	20	1	370	14		
12/18/2019 08:05:00	1000.00	954.00	98.20	100	25.00	25.60	20	1	370	14		
12/18/2019 08:06:00	1000.00	954.00	98.20	100	25.00	25.60	20	1	370	14		
12/18/2019 08:09:00	1000.00	954.00	98.20	100	25.00	25.60	23	1	370	14		
12/18/2019 08:10:00	1000.00	954.00	98.20	100	25.00	25.60	23	1	370	14		
12/18/2019 08:13:00	1000.00	954.00	98.20	100	25.00	25.60	23	1	370	14		
12/18/2019 08:53:00	1000.00	954.00	98.20	100	25.00	25.60	23	1	370	14		
12/18/2019 08:54:00	1000.00	954.00	98.20	100	25.00	25.60	23	1	370	14		

Verificacion Metrológica    Resultado    Humedad y Temperatura    Calibracion    Resultados Bloque A    Resultados Bloque B    Resultado Puesto #10    Humedad y Temp Amb    3D Model

- Novo Lab displays the records manager that allows filtering by dates, standard meter, serial number, block, position and/or customer in order to find the history records required to generate the calibration certificate.

### Records Manager

Start datetime: 12/18/2019 08:00    End datetime: 12/18/2019 23:29

Pattern meter: 533670-SHINAGAWA-Pattern 01    Meter S/N: A5987654321

Assigned block: Bloque A    Assigned slot: 4

Customer: 787854541545 - ABRAHAM SAAD

Collected history

Date Time	Block	Slot	Pp	Pm	Vp	Vm	Tp	Tm	Delta P	Flow Rate	Pattern Meter
12/18/2019 08:51	Bloque A	4	1000.0	967.0	98.19999695	100.0	25.0	25.39999962	13.0	23.0	533670
12/18/2019 08:53	Bloque A	4	1000.0	967.0	98.19999695	100.0	25.0	25.39999962	13.0	23.0	533670
12/18/2019 08:54	Bloque A	4	1000.0	967.0	98.20001221	100.0	25.0	25.39999962	13.0	23.0	533670

Calibration conditions

Calibration gas: Aire seco comprimido

Temperature (°C): 20    Atmospheric pressure (hPa/mbar): 1010    Relative humidity (%): 50

Exit    Build certificate



# NOVO LAB



- Exclusive administration panel in which the elements of metrological verification laboratory are configured, such as input columns, brands and models, sensors, standard meters, blocks, flows, among others.

The screenshot displays the NOVO LAB HMI V 1.0.1 (Beta) interface. The left sidebar contains navigation options: 'Device folders' (DDS TEST HSB, Master), 'Novo Lab', 'Maintenance', and 'Logout'. The main area shows the 'Input Columns' configuration table, which lists various input types and their current status (all 'Not assigned').

	Id	Name	Folder name	Device name	Column name	Template name	Creation Date	Modification Date
▶	1	Pattern Pressure (Pp)	Not assigned	Not assigned	Not assigned	Not assigned	12/12/2019 07:51:11	
	2	Meter Pressure (Pm)	Not assigned	Not assigned	Not assigned	Not assigned	12/12/2019 07:51:11	
	3	Pattern Volume (Vp)	Not assigned	Not assigned	Not assigned	Not assigned	12/12/2019 07:51:11	
	4	Meter Volume (Vm)	Not assigned	Not assigned	Not assigned	Not assigned	12/12/2019 07:51:11	
	5	Pattern Temperature (Tp)	Not assigned	Not assigned	Not assigned	Not assigned	12/12/2019 07:51:11	
	6	Meter Temperature (Tm)	Not assigned	Not assigned	Not assigned	Not assigned	12/12/2019 07:51:11	
	7	Flow Rate	Not assigned	Not assigned	Not assigned	Not assigned	12/12/2019 07:51:11	
	8	Pressure Diff.	Not assigned	Not assigned	Not assigned	Not assigned	12/12/2019 07:51:11	
	9	Pattern Serie	Not assigned	Not assigned	Not assigned	Not assigned	12/12/2019 07:51:11	
	10	Meter Serie	Not assigned	Not assigned	Not assigned	Not assigned	12/12/2019 07:51:11	

The 'Transmission sensor (# 2)' dialog box shows the following properties:

- Max value (psi): 30.00000000
- Resolution (hPa): 0.01000000
- Last U Max (kPa): 0.34000000
- k: 2.00000000
- Ei (kPa): -0.58000000
- Ei - 1 (kPa): -0.39000000
- X Min (hPa/mbar): 38.76090000
- X Max (hPa/mbar): 38.77090000

The 'Error Pattern' table shows the following data:

	Nominal Value (hPa)	Avg Error (hPa/mBar)
▶	1.8	-5.8
	208.8	-5.4875
	415.8	-5.4075
	622.9	-2.8175
	829.9	-5.42
	1036.9	-5.1775
	1244.0	-4.0725



# NOMINATION

MODULE





# CHARACTERISTICS



Automatic projection of energy amounts to be nominated by each delivery point based on the RTU's history.



Client web platform for the supply and transport nomination process.



Consumption validation for atypical data correction.

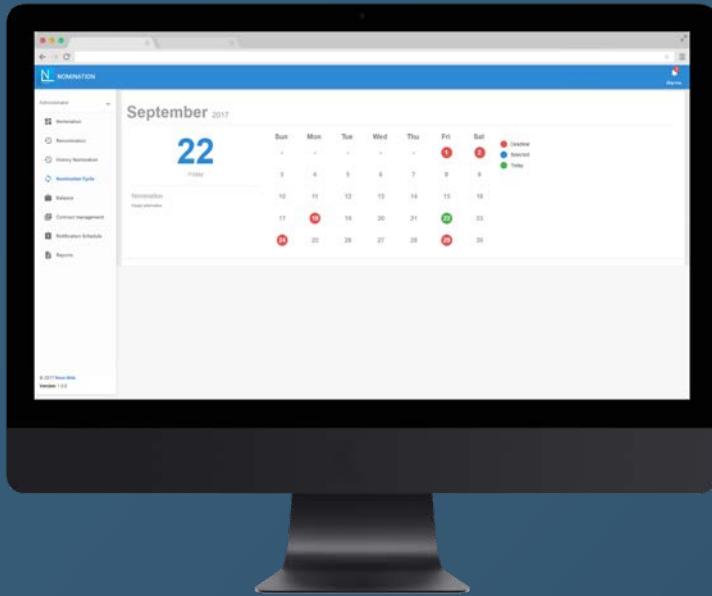


Integration with external consumption history sources for the nomination process.





# CHARACTERISTICS



Automatic nomination compliance. Alarms cycle for time.



Nomination cycle configuration for transport and supply regulation.



Nomination, re-nomination, contract changes and balance reports.







# CHARACTERISTICS



Supply and transportation contract management of fixed, swing and uninterruptable values.



Gas quality management by extraction point.



Volumetric base user's energy reserve management by citygate.



Display of delivery point balances, agents, and distribution system nodes.



# SETTLEMENT BILLING

MODULE



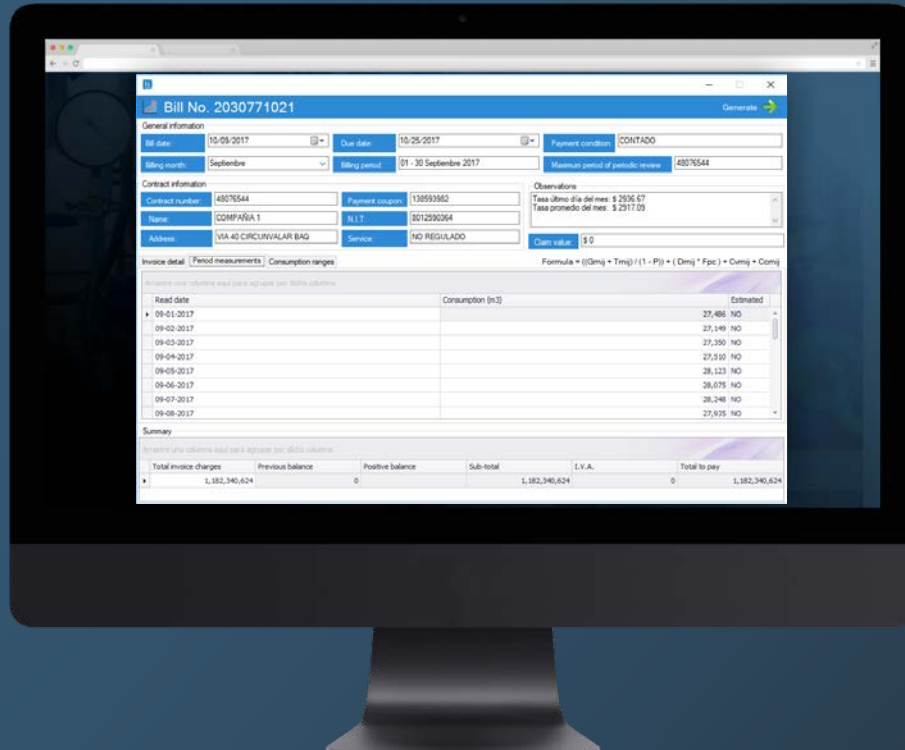


# SETTLEMENT & BILLING



Novo's settlement and billing module integrates with the nomination module to automate the reservation, assignment, operation, measurement, settlement, and billing processes of gas supply and transport services. Novo's settlement and billing module allows distribution companies (LCD's) to automate billing cycles, manage various contracts with their proper dateline, services and capacity consumption by client, it also allows the configuration and allocation of tariffs of supply

service and/or transport by fixed components and /or variables through advanced mathematical formulas edit options, concept configurations and taxes by service or contract, allowing management of additional charges due to maintenance fees or similar. Furthermore, it generates end user billing statements where the client sees detailed service information, alongside with concepts and applied taxes by agent and contract.





## FUNCTIONALITIES



- Contract Management
- Exchange rate Management
- Transport Pipeline Management
- Tariff Management
- Conversion Management
- Billing cycle Management
- Maintenance Management
- Billing Management
- Taxes Management
- Concept Management
- Provision Management
- Review and Approval of provisioned Amounts Management
- Advanced Formulas for Rate Calculations Management
- Settlement Management
- Review and Approval of Settled Amounts Management
- Reports



# SETTLEMENT & BILLING



**Bill No. 2031521928** Generate

**General information**

Bill date: 01/23/2018 Due date: 02/02/2018 Payment condition: CONTADO

Billing month: December 2017 Billing period: 15-December-2017 to 14-January-2018 Total period consumption: 5,256,821 M3

**Contract information**

Contract number: 151245 Payment coupon:   
 Name: PRODUCTORA DE PAPEL, S.A. N.I.T.: 47   
 Address: Service: ACTIVIDAD REGULADA Claim value: \$ 0

**Invoice detail** | Period measurements | Taxes

+ Add concept

Arrastre una columna aquí para agrupar por dicha columna

Concepts	Subtotal values	Result	Formula
Cargo por Uso de suministro Comercial 6 GNN	2,095,263.71 MEX	Liquidated	UsocomVI * EnergyTotalAmountForPeriod
Cargo por Capacidad de suministro Comercial 6 GNN	5,523,066 MEX	Liquidated	CapComVI * ActuallyDeliveredSupplyCapacityForPeriod
Cargo por Distribucion Comercial 6 GNN	7,416,659.5 MEX	Liquidated	Dist
Cargo por Servicio Comercial 6 GNN	1,389.86 MEX	Liquidated	Serv
Cargo por Conexión NO Estandar Comercial 6 GNN	128,483.55 MEX	Liquidated	Cont
Cargo por Conexión Estandar Comercial 6 GNN	683,098.93 MEX	Liquidated	Cont
Cargo por Desbalance Comercial 6 GNN	38,364 MEX	Liquidated	Dest

**Summary**

Arrastre una columna aquí para agrupar por dicha columna

Total invoice charges	Previous balance	Positive balance
15,908,155.53 MEX	0 MEX	



<b>BILL N°</b>	2030771021	<b>Page</b>	1
<b>Date of Bill:</b>	OCT-09-2017	<b>Month billed:</b>	SEPTEMBER
<b>Bill period</b>			
<b>Due date</b>	25-oct-17		
<b>Payment condition</b>	Single payment		

Request periodic review with an accredited inspection body and / or dealer and continue to enjoy gas service

<b>CONTRACT INFO</b>	<b>Contract N°</b>	48076544	<b>PAYMENT COUPON</b>	138593982
<b>NAME:</b>	COMPAÑIA 1	<b>N.I.T.:</b>	8012590364	
<b>ADDRESS:</b>	VIA 40 CIRCUNVALAR BAQ		<b>NO REGULATED SERVICE</b>	

Concepts	Qty (m³)	Subtotal
NON TECHNICAL LOOSES		9,330,050
DISTRIBUTION CHARGE		111,579,270
GAS SUPPLY	2,028,714	880,199,843
GAS TRANSPORTATION		148,092,307
MARKETING SUPPLY		32,694,970
SUPPLY MANAGER FEE		524,184
<b>Total bill charges:</b>		<b>1,182,420,624</b>

Notes
Last day of month rate: \$2936.67
Monthly average rate: \$2917.09

<b>Previous balance:</b>	\$ -
<b>Positive balance:</b>	\$ -
<b>Sub-total:</b>	<b>\$ 1,182,420,624</b>
<b>Taxes:</b>	\$ -
<b>TOTAL</b>	<b>\$ 1,182,420,624</b>



<b>Bill No.</b>	2030771021
<b>Contract No.</b>	48076544
<b>TOTAL TO PAY</b>	<b>\$ 1,182,420,624</b>





Wireless Technologies USA  
Witech USA Corp

20283 State road 7. suite 400  
Boca Raton, FL 33498  
Estados Unidos de América  
Teléfono: (561) 883 8129  
[www.witechusa.com](http://www.witechusa.com)