

WI-LOG

DATALOGGER



Wireless Technologies USA
Witech USA Corp



FEATURES

WI-LOG



Daily or hourly storage capacity of up to 90 days.



Ultra-low power consumption design guarantees battery lifetime over 10 years.



Optional gauge and absolute pressure transducer.



Easy remote configuration; pressure and power supply monitoring, pulse counter, and history and variable reading via Scada and WT-Config software.



High availability and non-lockup system prevents unit from freezing. Verification of cellular signal, detects and reestablishes any signal interruption.



3G+

Cellular 3.5G technology (4G LTE optional)



Modbus Protocol ASCII/RTU/TCPIP for reading of operational records and Modbus Enron for historical records.





BENEFITS

WI-LOG



Historical monitoring of pressure trends delivered to users.



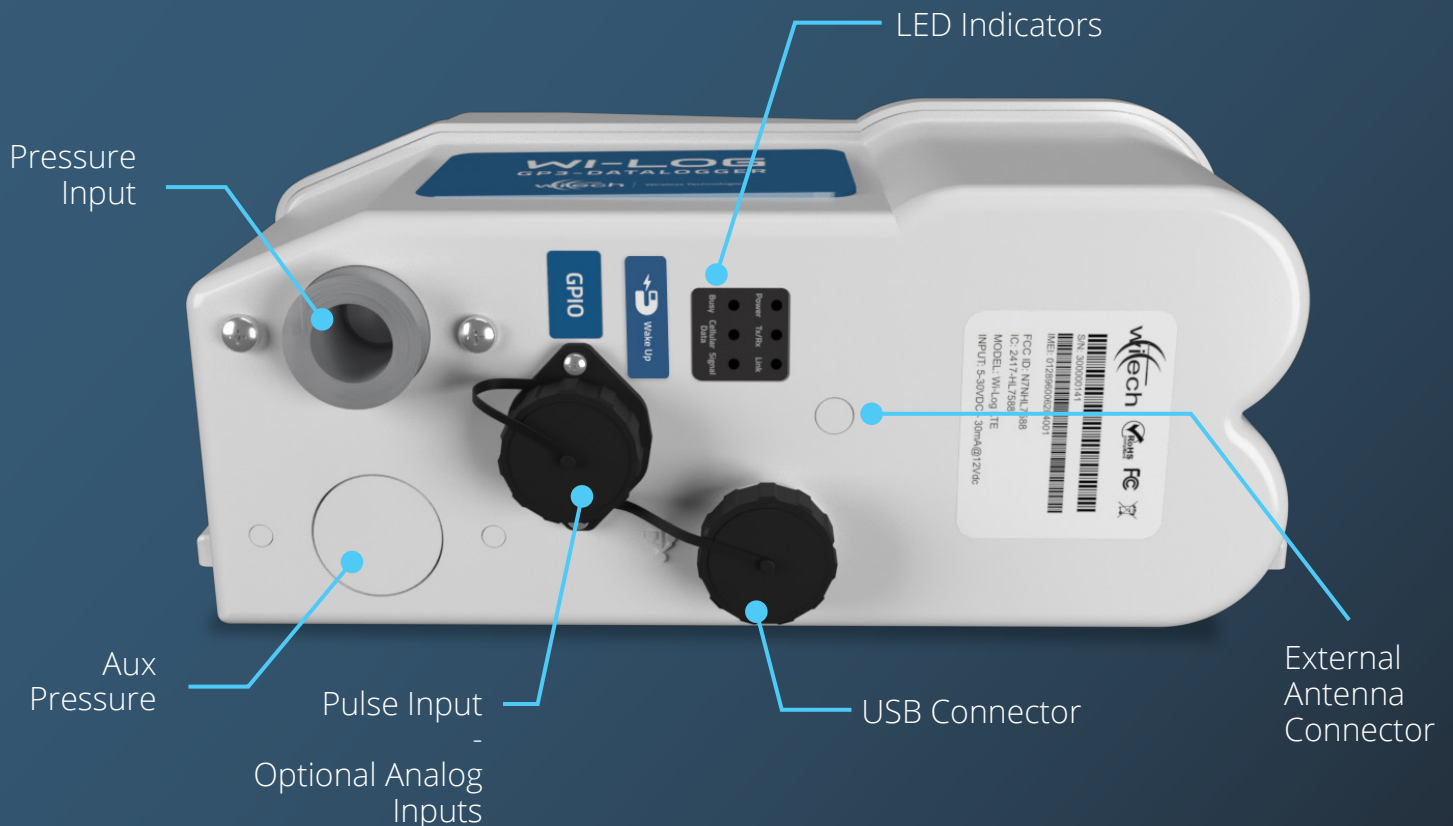
Increases quality and service availability while helping to detect problems early in the network before customers.



Storage capacity of consumption profiles of different types of customers for more accurate predictions and provisioning in order to meet the hourly or day to day consumption.



Wireless reading allows you to take readings in a few seconds in order to generate invoices immediately.



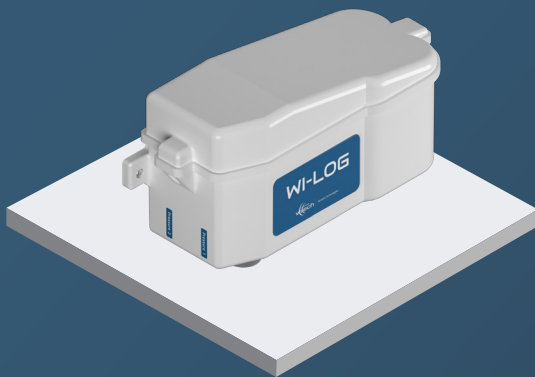


SCADA SYSTEM COMMUNICATION

WI-LOG

Cellular Network

Control Room



WI-LOG



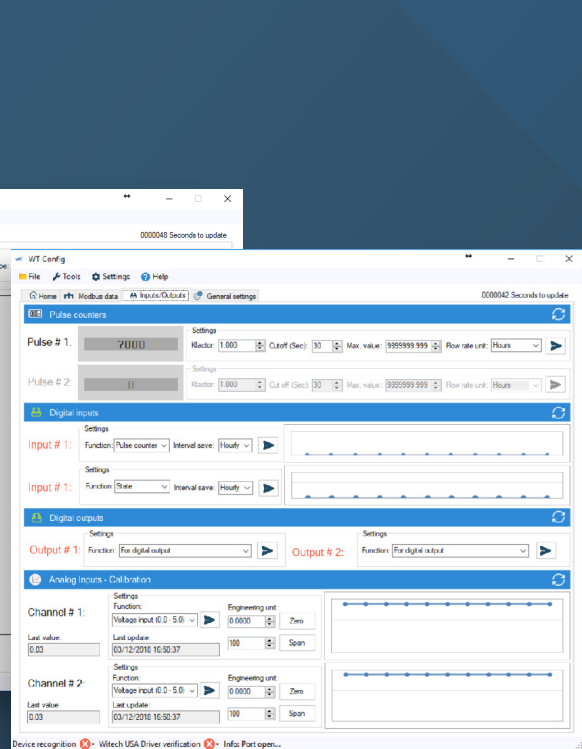
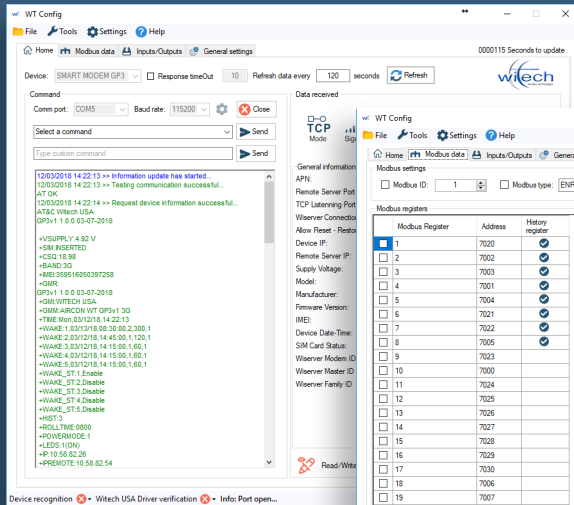
SCADA System



CONFIGURATION AND CALIBRATION

WI-LOG

Parameters configuration and analog inputs calibration through WT-Config software and NOVO Mobile.





TECHNICAL SPECIFICATIONS

WI-LOG

Housing

Material:	Polycarbonate
Dimensions:	171 mm x 109 mm x 82 mm
UV Resistance:	UL 508
Ingress Protection (EN 60529):	IP66/IP67
NEMA Class:	1, 4, 4X, 12, 13

Communications

Remote:	Cellular 3.5G technology and Optional 4G LTE Quad-band GSM / GPRS / EDGE (850 MHz, 900 MHz, 1800 MHz, 1900 MHz)
	Hexa-band UMTS WCDMA FDD (800 MHz (B19), 850 MHz(B5/B6), 900MHz(B8), 1900 MHz(B2), 2100MHz(B1))
Local:	Micro USB for AT commands and WTConfig Software configuration
Protocol:	Modbus ASCII/RTU, Modbus TCP/IP, Modbus Enron
Data Encryption:	AES-128 (Advanced Encryption Standard) for data communication security

Power

Input:	7.2Vdc - 4xD battery 3.6V
Consumption:	~50mA tx/rx, ~9uA Sleep mode 12Vdc
Battery life:	Typically > 10 years





TECHNICAL SPECIFICATIONS

WI-LOG

Inputs

Digital:	Two pulse counters form-A low speed or two dry contact digital inputs
Analog:	Two 12bit resolution, 0-5Vdc/4-20mA configurable
Internal:	Supply voltage

History

Daily:	90 records
Hourly:	2160 records

Environment

Hazardous Environment:	Designed for Class 1, Div. 2
Operating Temperature:	-22°F to 140°F
Humidity:	Up to 95% non-condensing

System Upgrade

USB and FOTA

Real Time Clock

+/- 1 sec per day typical accuracy, synchronizes with cellular network

Certifications and Environmental

RoHS Directive Compliant:	2011/65/EU
Disposing of the Product:	2012/19/EU (WEEE)
FCC ID:	N7NHL8548
FCC IC:	2417C-HL8548





Wireless Technologies USA
Witech USA Corp

20283 State road 7. suite 400
Boca Raton, FL 33498
United States of America
Phone: (561) 883 8129
www.witechusa.com