

WT-GP3-V1 SMART MODEM

CONTINUOUS DATA COMMUNICATION
AND AVAILABILITY FOR HAZARDOUS
LOCATIONS

CERTIFIED



FOR HAZARDOUS
LOCATIONS



Wireless Technologies USA
Witech USA Corp



BENEFITS

WT-GP3-V1
SMART MODEM



3G+ technology for better performance compared to 3G and GPRS modems.



Integrated GPS for Geolocation applications and Time synchronization.



Ultra-low power, designed for remote operations using solar panels and batteries.



RS232, RS485 and I2C connections for industrial telemetry equipment.



Modbus RTU to Modbus TCP/IP protocol converter for serial equipment integration to Scada systems.



Low cost compact design for a lower investment in Scada equipment infrastructure.



Digital and analog I/O's pulse input for remote monitoring of Scada signals: 0-5 Vdc, 4-20mA and ON/OFF. Polled via Modbus ASCII/RTU/Modbus TCP/IP.



Easy local or remote configuration through WT Config software in Windows mode. Allows remote firmware update.



Datalogger function for digital and analog I/O's. Historical data compatible with NOVO Scada software.



Compatible with Wiserver's fixed public IP address assignation independent from the cellular provider.



Multiple simultaneous TCP connections for monitoring modem's internal I/O's and external equipment variables.



Equipped with Anti-lockup system. Continuous verification of cellular signal, detects and reestablishes any signal interruption.

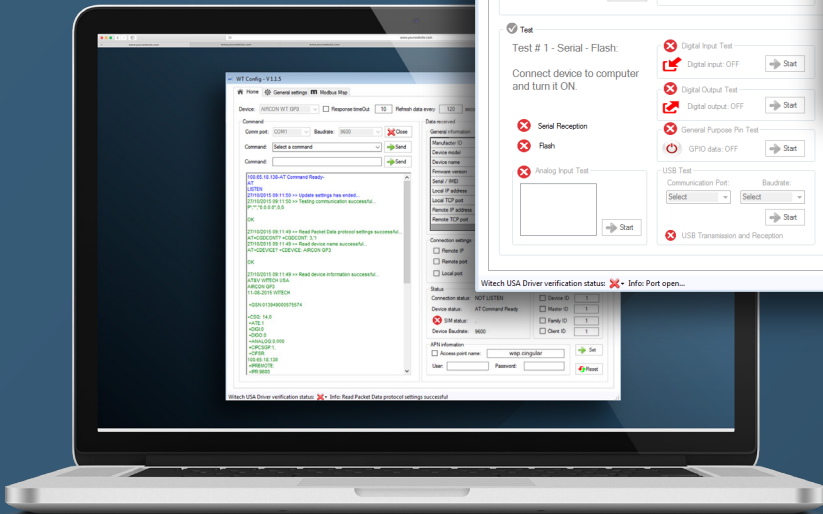
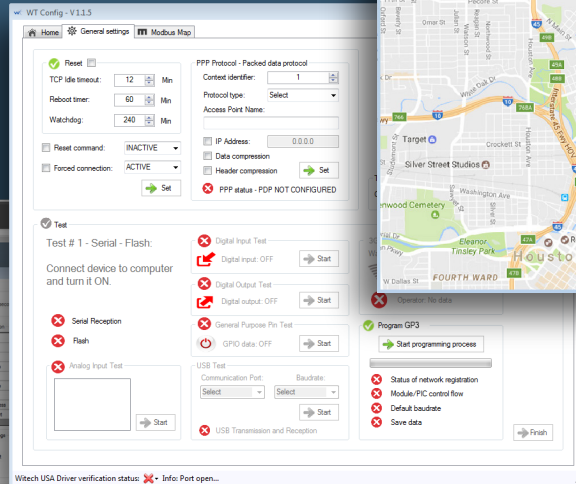
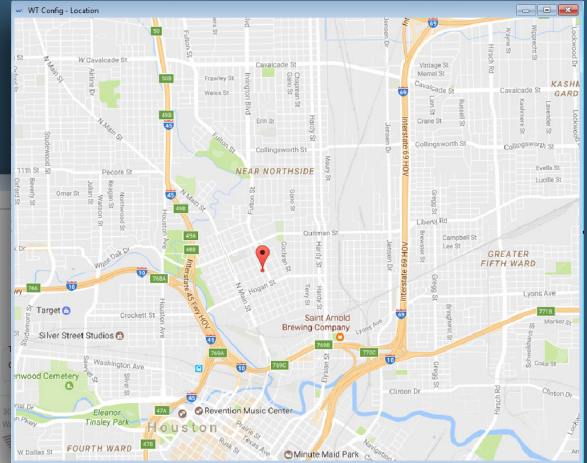


WT CONFIG

SOFTWARE

WT-GP3-V1

SMART MODEM





TECHNICAL SPECIFICATIONS

WT-GP3-V1
SMART MODEM

Specifications Smart Modem® WT-GP3-V1

Hazardous environment:	UL approved for Class 1, Div. 2
Dimensions:	70 x 53.5 x 32 mm
Housing Materials:	ABS
Interface Connector:	Principal 10 pins connector
Antenna:	Female SMA Connector, 50 Ohm
Radio Frequency:	GSM/GPRS/EDGE 850/900/1800/1900 MHz UMTS WCDMA FDD 800/850/900/1900/2100 MHz
Sensitivity:	GSM/GPRS/WCDMA -109 dBm UMTS WCDMA -110 dBm
Transmit Power:	23 dBm +- 2 dB
LEDs:	Power, RSSI, Tx/Rx data, Data, Link Status
Protocol Support:	Modbus RTU, ASCII, RTU TCP/IP Client
Software updates:	Over the air and local firmware updates

3G Packet Data

Radio Module:	HL8548-G
Mode:	Hexa-Band HSDPA/WCDMA and Quad-Band GSM/GPRS/EDGE
Application Interface:	RS232, RS485, USB and I2C
Host Protocol:	TCP/IP(3G), UDP,AT, USB(CDC)
Sim Access:	External -3V, MicroSim
Data Security:	IPSEC Packet Encryption

Environment

Operating Temperature:	-22°F to +140°F
Humidity:	Up to 95% non-condensing





TECHNICAL SPECIFICATIONS

WT-GP3-V1
SMART MODEM

GPS

Connector:	SMA Female
Antenna:	4V Active
Radio Frequency:	GPS 1575.42 MHz/GLONASS 1602 MHz
GPS Protocol:	NMEA-0183, SIRF Binary

Over the Air Control

Monitors signal strength RSSI level, 2 opto-isolate, digital inputs or pulse input, 1 analog input, 2 opto-isolated digital outputs and input voltage.

Power

DC Voltage:	5 – 30Vdc*
Sleep Mode:	6uA@ 12V Programmable ultra low power sleep control, wake up via timer or digital input
TX Mode:	150 mA (Maximum)
RX Mode:	100 mA (Maximum)

**check the power supply options and voltage ranges on the quick setup guide before to connect the modem.*

Analog Inputs

2 Analog Inputs:	0-5Vdc, 4-20mA
------------------	----------------

Control and Digital Inputs/Outputs

2 Digital Outputs:	max 100mA, 50Vdc
2 Digital Inputs:	max 10mA, 3.6Vdc



TECHNICAL SPECIFICATIONS

WT-GP3-V1
SMART MODEM

Power Consumption @12VDC Input (Estimated)

<i>State</i>	<i>Min</i>	<i>Typical</i>	<i>Max</i>	<i>Units</i>	<i>Min</i>	<i>Typical</i>	<i>Max</i>	<i>Units</i>
Sleep Mode:	54	72	120	uW	4.5	6	13	uA
Standby:	247.2	276	312	mW	20.6	23	26	mA
TX Mode:	276	300	960	mW	23	25	150	mA

Certifications and Environmental

RoHS Directive Compliant:	2011/65/EU
Disposing of the Product:	2012/19/EU (WEEE)
FCC ID:	N7NHL8548
FCC IC:	2417C-HL8548



Wireless Technologies USA
Witech USA Corp

20283 State road 7. suite 400
Boca Raton, FL 33498
United States of America
Phone: (561) 883 8129
www.witechusa.com