

Quick Setup Guide

WT-GP3-V1 SMART MODEM



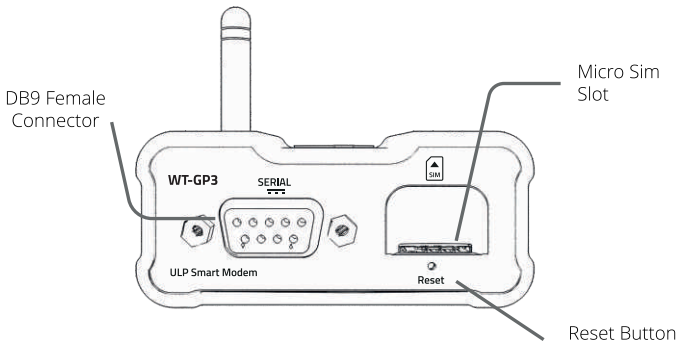
Wireless Technologies USA
Witech USA Corp

Content

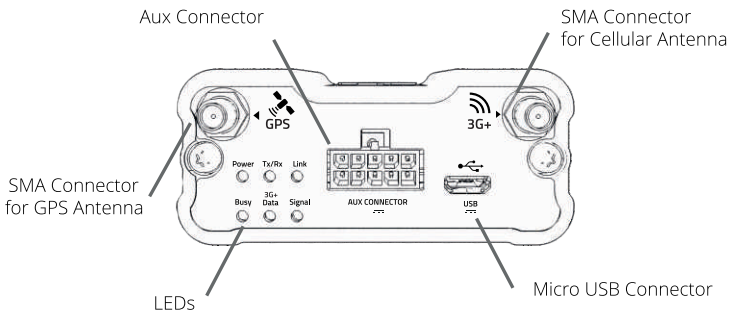
Quick look at Modem WT - GP3 - V1 3G	4
LED Signals	5
What comes in the box	6
Additional accesories	7
Operational ratings	8
Enclosure Requirements	9
Installation and operating Instructions	9
Starting the WT - GP3 - V1	10
WT - GP3 - V1 as Server TCP	19
WT - GP3 - V1 as Client TCP	21
We want to help!	24

Quick look at 3G Modem WT - GP3 - V1

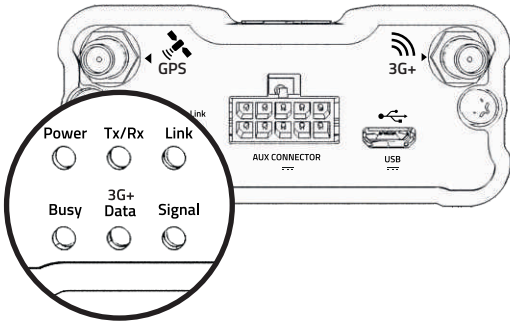
Front View



Rear View



LED Signals



Power (Red):
Indicates if the modem is ON.

Tx/Rx (Blue):
Indicates data flow through USB or D89.

Link (Green):
Indicates the modem connection status.

Busy (Red):
Indicates if the modem is busy.

3G+ Data (Blue):
Indicates data flow from/to the network.

Signal (Green):
Indicates the signal strength of the modem.

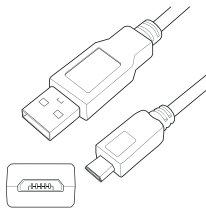
What comes in the box

The following accessories are included in the modem WT – GP3 - V1 3G Modem box:



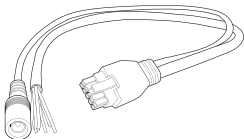
Cellular Antenna

Using this antenna will allow connection with GPRS and 3G networks in the area.



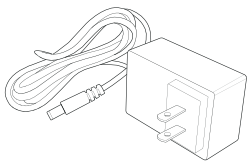
USB to Micro USB cable

Cable that allows to connect the modem WT – GP3 to any computer via USB for all configurations; update firmware, and/or provide energy from a power adapter.



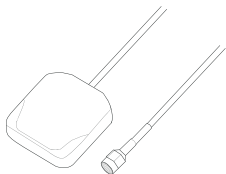
Aux cable

With this cable various functionalities are possible with the WT – GP3 - V1 3G Modem. Connect the power adapter; 2 analog inputs, 1 output and 2 digital inputs, as well as I2C pins for connecting to external devices.



Power Adapter

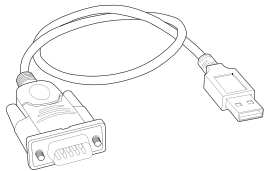
Use this adapter with the aux cable for providing power to the modem WT – GP3 - V1 3G.



GPS Antenna

Using this antenna will allow connection with GPS and GLONASS satellite systems.

Additional Accessories



USB – Serial Cable

USB – Serial Cable – this cable is not included in the modem WT – GP3 - V1 box. Using this cable allows the modem to connect with any computer via a D89 connector to access all configurations and/or history or other stored variables.



Micro SIM card

SIM card type supported is 3FF type as known as Micro SIM.

Note: The user must validate the supported bands at moment to choose SIM Card mobile operator.

Operational Ratings

Power supply:

5-30 Vdc, 150 mA max, LPS or Class 2 - Main.

5-30 Vdc, 150 mA max, LPS or Class 2 - DB9.

5 Vdc, 230 mA max, LPS or Class 2 - USB.

Note: Only one supply source may be used at any one time.

Environmental: -30°C to +60°C ambient.
Temperature code: T5.

Enclosure Requirement

Front and Rear sections are made of R/C (QMFZ2), Chi Mei Corp., cat no. PC-110, rated minimum V-2, 125 C (RTI). 1.6 mm thick (nominal). Secured together by screws.

Installation and operating Instructions

Suitable for use in Class I, Division 2, Groups A, B, C, D hazardous locations, or nonhazardous locations only.

These devices are open type devices that are intended to be installed in a tool only accessible enclosure that is suitable for the environment.



WARNING - EXPLOSION HAZARD

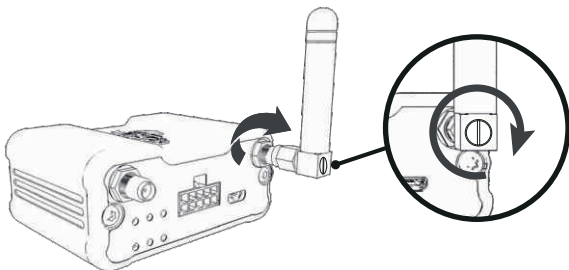
Do not disconnect equipment while the circuit is live or unless the area is known to be free of ignitable concentrations.

The USB port may only be used for supplying power to the equipment during installation and set-up within non-hazardous location. The USB port and its associated interconnecting cable shall remain inaccessible within the hazardous location.

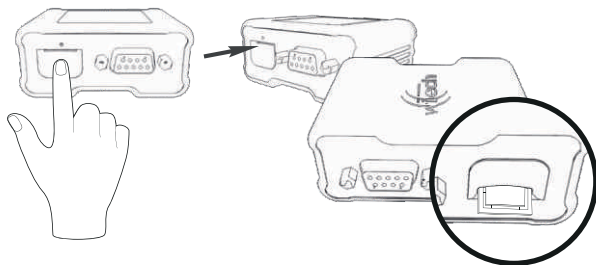
Antennas intended for use in Class I, Division 2 hazardous locations must be installed within the end use enclosure. For remote mounting in an unclassified location, routing and installation of the antennas shall be in accordance with National Electrical Code Requirements (NEC/CEC).

Starting the WT – GP3 - V1

To begin using the modem WT – GP3 - V1 follow the next steps:

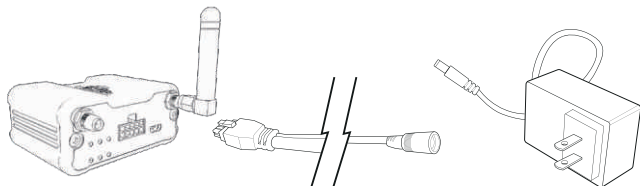


- 1.** Connect the cellular antenna to the SMA connector. The correct way to install it is by screwing it clockwise.

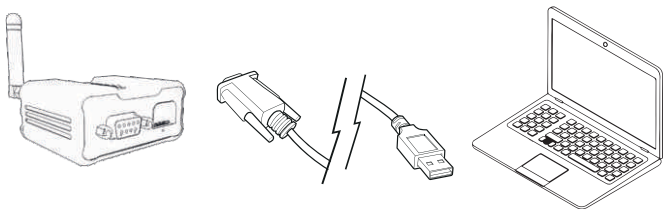


- 2.** Insert the Micro Sim Card in the provided slot. Follow the guide to correctly insert it. The provided slot secures the Micro Sim Card to prevent it from disconnecting.

3. Connect the Aux Cable.



4. Next, connect the power adapter with the Aux Cable.

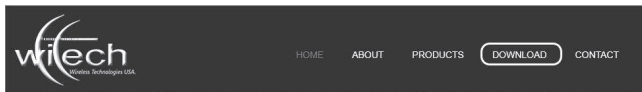


5. Connect the USB to Micro USB Cable to any available USB port in the computer for the modem configuration.

6. Run the WT – Config 1.4.1 or recent desktop application. Please download from:

www.witechusa.com

Once you have been in Witech USA website, select the option **Download** to enter to the downloads section.



If you already have an user with Witech USA, select the **Login** option,. If not, you have to sign up. For that press the button **Register**.

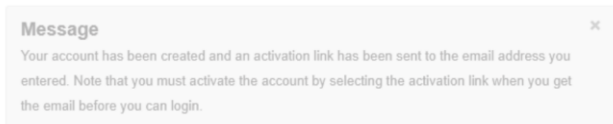


To download an application or firmware please sign in on our website

Login

Register

With the successful registration, a message like below appears. Search in the inbox of the account used for the register and click on the activation link that you will have received.



Now with your **username** and **password** you can make the registration clicking on the **Register** button. Type the needed data and click **Log In**.

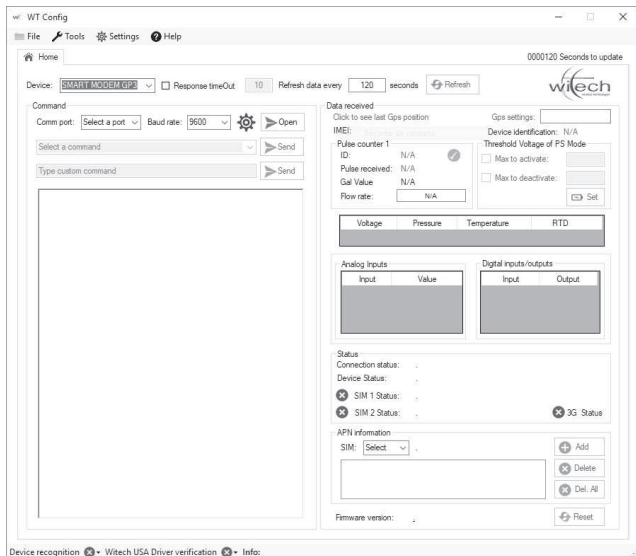
Once logged in, you have the options for download Software or Firmware. For this case, click on **Software**.



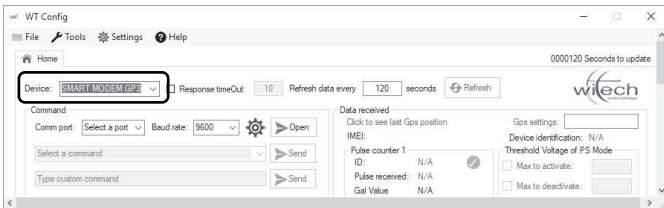
Select the software for install **WT Config** and click in the **Download** button. Your application should download inmediately. The installation process is friendly, you will have a guide during all the process.

SOFTWARE	
<input type="checkbox"/> Field Manager	Details Download
<input checked="" type="checkbox"/> WT Config	Details Download
<input type="checkbox"/> SISTEGO-v1.0.9.apk	Details Download
<input type="checkbox"/> Gateway	Details Download
<input type="checkbox"/> NOVO Mobile	Details Download

All WT – GP3 - V1 3G modem configurations can be accessed through this application; update firmware, establish connections, between other functionalities.



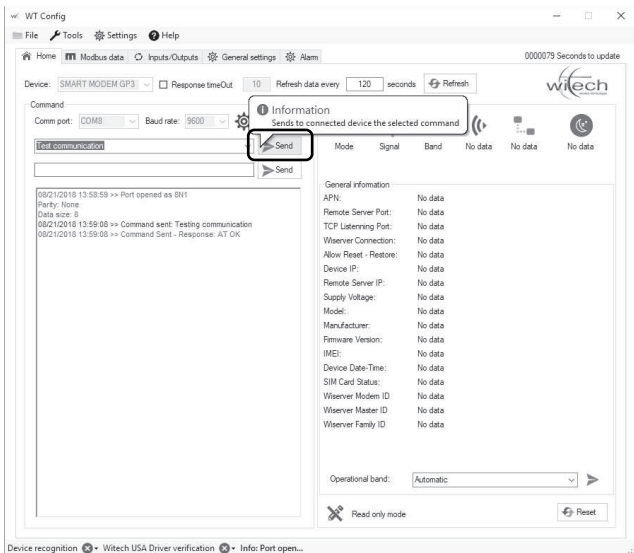
7. Choose SMART MODEM GP3 in the Device section.



8. At this point, please know the **COMM port** that the computer assigns to the modem when it connects via USB. With this information, go to the **Command** section and select the correct port and pay no attention to the **Baud Rate** value (given is connected via USB) click the button **OPEN** in order to gain access to the modem.



9. Once the port has opened (in this case COM8), if everything is correct the screen will show and notify the type of parity; the data size and its configuration.



It is recommended to send the Test communication command to make sure there is communication with the modem.

10. By pressing the Refresh button located in the top right corner, all data will be updated in the General Information box – all configuration information can be viewed here.

The screenshot displays the WT Config application window. At the top, there is a menu bar with 'File', 'Tools', 'Settings', and 'Help'. Below the menu bar, there are navigation tabs: 'Home', 'Modbus data', 'Inputs/Outputs', 'General settings', and 'Alarm'. The main interface is divided into several sections:

- Device:** SMART MODEM GP3. There are checkboxes for 'Response timeOut' (set to 10) and 'Refresh data every' (set to 120 seconds). A 'Refresh' button with a circular arrow icon is highlighted with a red box and a callout bubble that says 'Information Initiates/stops the update information process'.
- Command:** A section for sending commands. The 'Comm port' is set to COM8 and the 'Baud rate' is 9600. A dropdown menu shows 'Test communication'. There are 'Send' buttons and a text input field for 'Type custom command'.
- Data received:** A section showing received data. It includes a 'TCP' mode indicator, signal strength, and other status icons. Below this is a 'General information' section.
- General information:** A list of device details:
 - APN: witech.com,user,password
 - Remote Server Port: 1010
 - TCP Listening Port: 2020
 - Wiserver Connection: Disable
 - Allow Reset - Restore: NO
 - Device IP: NO IP
 - Remote Server IP: 192.168.1.1
 - Supply Voltage: 11.97 V
 - Model: GP3v1.0 4G
 - Manufacturer: WITECH USA
 - Firmware Version: +GMI:WITECH USA
 - IMEI: 01428400087233
 - Device Date-Time: Error reading value.
 - SIM Card Status: INSERTED
 - Wiserver Modem ID: 2
 - Wiserver Master ID: 1
 - Wiserver Family ID: 3
- Operational band:** A dropdown menu currently set to 'Automatic'.
- Read/Write mode:** A section with a 'Reset' button.

The bottom status bar shows: 'Device recognition' (with a red X), 'Witech USA Driver verification' (with a red X), and 'Info: Port open...'.

WT – GP3 - V1 as Server TCP

From factory, the WT – GP3 - V1 3G is set up by default as Server TCP. Nevertheless, a few configurations must be done in order for this process to be executed correctly: *APN and Listening Port*.

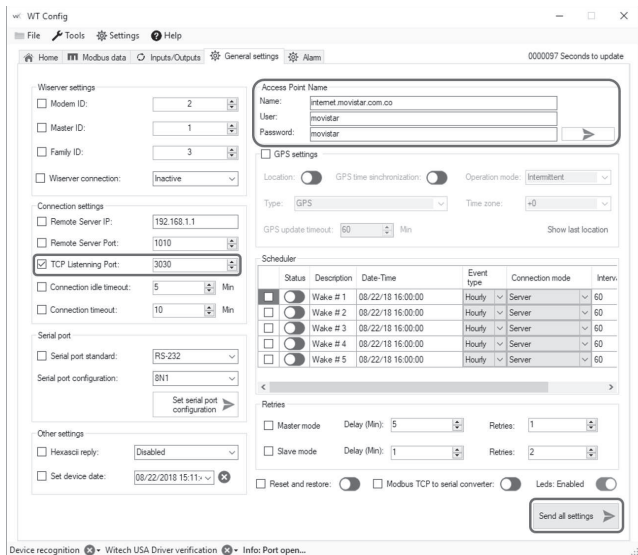
This type of parameters can be configured in the **General Settings Tab**.

1. In the **Access point name** section, the Sim Card operators APN can be configured. Make sure to correctly type the **Name, User, and Password**.

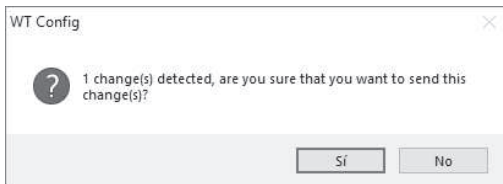
To set these parameters, please send the changes by clicking on the green triangle in the bottom right corner.

2. To configure the TCP Listening Port, go to the **Connection Settings tab** and select the **TCP Listening Port** parameter and type it in or use the arrows to configure the correct value.

To send these changes, click on **Send All Settings** in the right bottom corner. When clicking this button, all parameters that have been chosen will be sent to the modem.



A pop-up notification window will appear requesting to confirm these changes.



At the Home tab, you can verify that all changes were successfully made and that the modem is already configured with that Listening Port.

```
08/22/2018 15:09:45 >> Command sent: Set device APN
08/22/2018 15:09:45 >> Command Sent - Response: AT+APN=
1,"internet.movistar.com.co","movistar","movistar" +APN:
1,"internet.movistar.com.co","movistar","movistar"
```

OK

Please Wait: Setting Server...

LISTEN:100.69.222.213/3030:TCP

-- AT Command Ready --

WT – GP3 - V1 3G as Client TCP

The first step for the modem WT – GP3 - V1 3G to work as Client TCP is to configure it as Server TCP; as described in the previous section.

Once the APN and TCP Listening Port have been configured, and with this, a successful connection to the Sim Card Operator network.

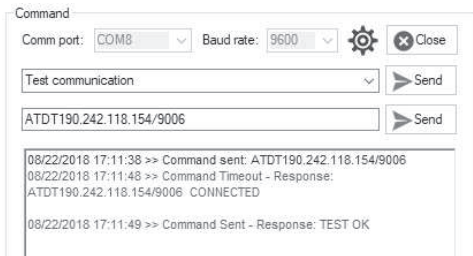
Next, two parameters are needed in order to make a call/connection as client TCP: the server IP Address (**Remote Server IP**) where the connection is directed to and the Listening Port (**Remote Server Port**).

Please follow the following steps to quickly establish a connection a client TCP:

1. Click on the **Home** tab and look for the **Type custom command** section. In this section you can type in valid commands for the WT – GP3.

2. Type in **ATDRemoteServerIP/RemoteServerPort** and click **Send**.

If the Remote Server is listening and all validations between IP are accepted by the network, it will successfully connect. This can be viewed when the message **CONNECTED** appears.



Note: the WT – GP3 - V1 3G has been designed in order to offer multiple functionalities that are not included in this quick set-up guide.

For any other type of connections like client TCP; alarm calling, events and/or automatic reports, the values of the Listening Port and Remote Server IP can be configured in the **General settings** tab, **Connection Settings** section, **Remote Server Port** and **Remote Server IP** parameters.

The screenshot shows the 'WT Config' application window. The 'General settings' tab is selected. The 'Connection settings' section is highlighted with a red box. The 'Remote Server IP' field contains '192.168.1.1' and the 'Remote Server Port' field contains '1010'. Other settings include 'Modem ID' (2), 'Master ID' (1), 'Family ID' (3), and 'Wiserver connection' (Inactive). The 'Access Point Name' section shows 'Name: inte', 'User: mov', and 'Password: mov'. The 'GPS settings' section shows 'Location' (off) and 'Type: GPS'. The 'Scheduler' section shows a table with columns for 'Status' and 'De'.

	Status	De
<input type="checkbox"/>	<input type="checkbox"/>	Wa
<input type="checkbox"/>	<input type="checkbox"/>	Wa
<input type="checkbox"/>	<input type="checkbox"/>	Wa

We want to help!

Our team is available for all technical support. Please visit our website or call us at any time:



Phone:

+1 561 883 8130



Business Hours:

8:00 a 17:00 (UTC-06:00)



E-mail:

info@witechusa.com



Website:

<http://www.witechusa.com/>



Wireless Technologies USA
Witech USA Corp

20283 State road 7. suite 400
Boca Raton, FL 33498
United States of America
Phone: (561) 883 8129
www.witechusa.com